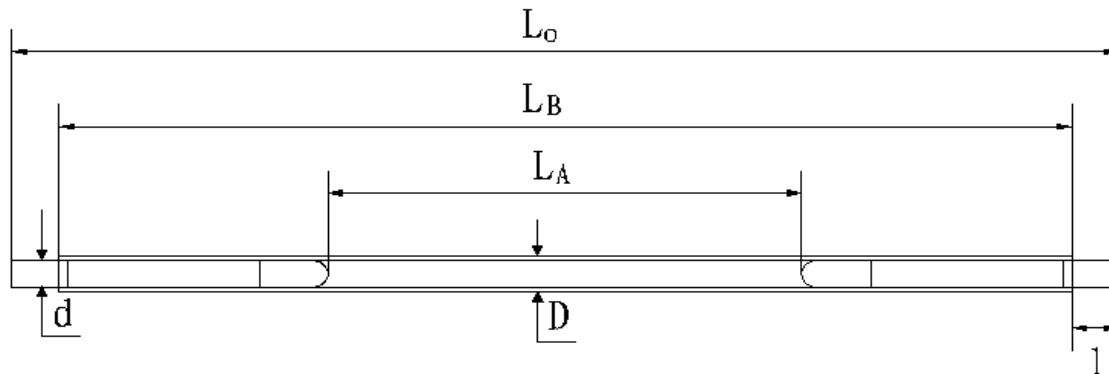


Xenon Lamp: STX-8x100x250



Dimension: $L_A=100\text{mm}$ $L_B=234\text{mm}$ $L_O=250\text{mm}$ $D=8\text{mm}$ $d \times l=5 \times 8\text{mm}$
Materials:

Glass tube: UV-filtered quartz tube

Electrodes: Cerium-tungsten

BASE rod: molybdenum

Electrical parameters:

Starting voltage: $>800\text{V}$

Trigger voltage: $>15\text{kV}$

Trigger pulse: $>3\mu\text{s}$

Lifetime: 10000000 pulses at output average power 1500W-2000W

Lifetime: 1000000-2000000 pulses at output average power 3000W-4000W

Anode and cathode: no difference. You can use any end of the lamp as anode.

Remark: the above electrical parameters are for reference. Their actual operation parameters are related with the power supply etc.