

Green Laser Pointer



Specifications

Model	GLP-XX-S (silver) or GLP-xx-B (black) XX: laser power in mW
Laser Wavelength	532nm
Output Power	5mW, 20mW, 50mW & 100mW available
Operation Voltage	3VDC
Operation Current	<300mA
Output Model	CW
Beam Divergence	<1.2rad
Battery Source	2xAAA Batteries
Dimension	Ø13.2x134mm
Weight	45 Grams (Batteries Excluded)
Colour	Black/Silver



If the customer wants its own brand marked using a laser marking system, the marks are similar to the following pictures:



Dual Red and Green Laser Pointer

Wavelength: 532nm(Green) & 650nm(Red)
Output Power: <1mW, <5mW
Switch Type: 2 * Momentary Push Buttons
Input Voltage: 3VDC
Operation Temp: 15°C~35°C
Dimension: (L) 155mm*Ø13mm
Battery: 2*AAA Batteries
Material: Brass
Feature: Dual Green and Red Laser



Wireless Green Laser Pointer With Page Up/Down Presentation Function



Specifications:

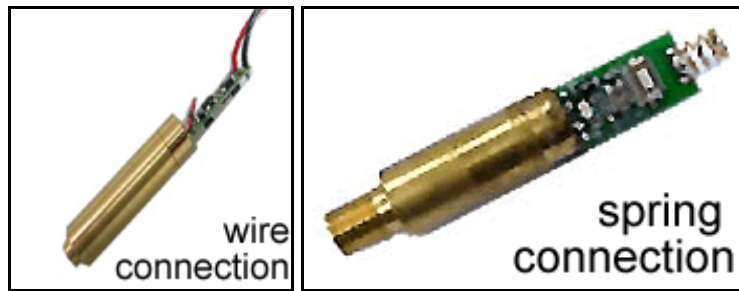
Laser Wavelength: 532nm
Output Power: <1mW/, <5mW
Input Voltage: 3VDC
Battery: 2*AAA Battery
Transmission Distance: abt. 10M
RF Wireless at 2.4GHz
Material: Plastic
System Request: Windows, Linux, Mac OS

Features:

Page Up/ Down Laser Presenter
USB Plug-and-Play
No Driver Request



Green Laser Modules



Features

Structure: Diode pumped solid-state green lasers.
 Lasing wavelength: 532nm
 Output power: <5mW
 Operating temperature: 15~35°C

Applications

Leveler
 Laser pointer

Absolute maximum ratings (GLM-05)

Parameter	Rating	Unit
Supply voltage	+3.5	V
Input signal voltage	-	V
Operating temperature	15 ~35	°C
Storage temperature	0~ +50	°C

Specifications (GLM-05)

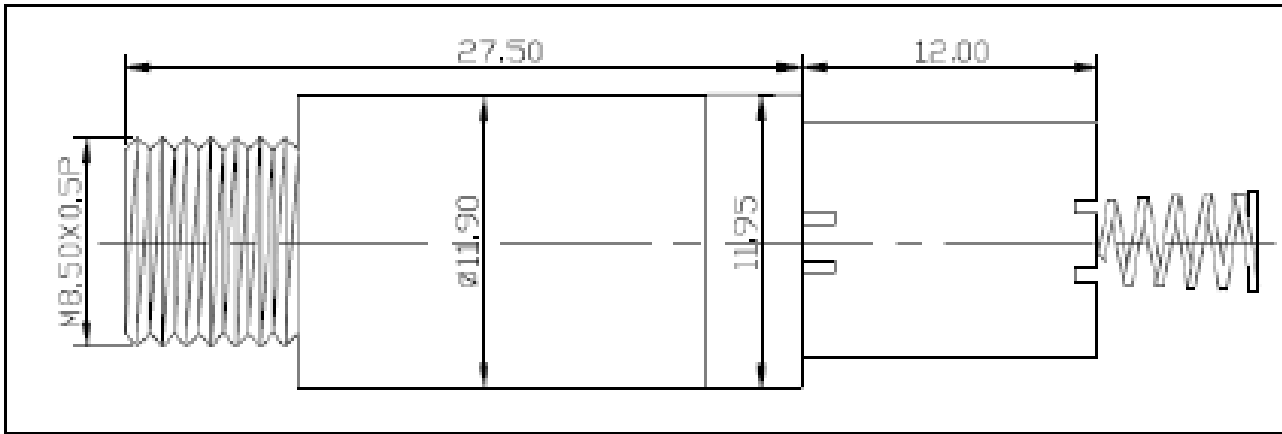
Parameter	Condition	Min	Typ	Max	Unit
Wavelength		-	532	-	nm
Output power		2	3.7	4.5	mW
Power stability	Topr=15 ~ +35°C	-10		+10	%
Transverse mode			TEM00		
Beam divergence		-	<1.2	-	mrad
Operation mode			CW		
Expected life			3000		hour

Description of Model Number: GLM-XX-Y-Z-BW

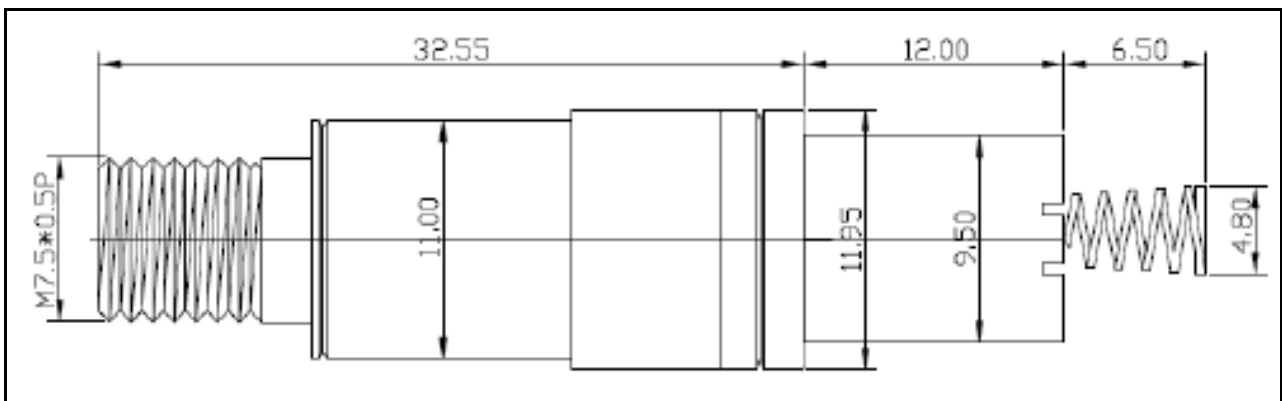
GLM – green laser module
 XX - maximum output laser power
 Y - Pack dimension, DIM A or DIM B
 Z - wire connection type, S (spring) or W (wire)
 BW - BW means a button switch assembled into the module.

Example:

GLM-05-A-W: green laser module, maximum 5mW, outlook is DIM A, wire connection.
 GLM-05-B-S: green laser module, maximum 5mW, outlook is DIM B, spring connection.



Dimension A



Dimension B